



REVIEW

REVISED The Immune System and Responses to Cancer: Coordinated Evolution [version 3; peer review: 2 approved]

Brendon J. Coventry¹, Maciej Henneberg^{2,3}

¹Discipline of Surgery, Royal Adelaide Hospital, University of Adelaide, Adelaide, South Australia, 5000, Australia

²Biological Anthropology and Comparative Anatomy Unit, University of Adelaide, Adelaide, South Australia, 5005, Australia

³Institute of Evolutionary Medicine, The University of Zurich, 8057 Zurich, Switzerland

V3 First published: 12 Aug 2015, 4:552
<https://doi.org/10.12688/f1000research.6718.1>
 Second version: 06 Nov 2020, 4:552
<https://doi.org/10.12688/f1000research.6718.2>
 Latest published: 27 Jan 2021, 4:552
<https://doi.org/10.12688/f1000research.6718.3>

Abstract

This review explores the incessant evolutionary interaction and co-development between immune system evolution and somatic evolution, to put it into context with the short, over 60-year, detailed human study of this extraordinary protective system. Over millions of years, the evolutionary development of the immune system in most species has been continuously shaped by environmental interactions between microbes, and aberrant somatic cells, including malignant cells. Not only has evolution occurred in somatic cells to adapt to environmental pressures for survival purposes, but the immune system and its function has been successively shaped by those same evolving somatic cells and microorganisms through continuous adaptive symbiotic processes of progressive simultaneous immunological and somatic change to provide what we observe today. Indeed, the immune system as an environmental influence has also shaped somatic and microbial evolution. Although the immune system is tuned to primarily controlling microbiological challenges for combatting infection, it can also remove damaged and aberrant cells, including cancer cells to induce long-term cures. Our knowledge of how this occurs is just emerging. Here we consider the connections between immunity, infection and cancer, by searching back in time hundreds of millions of years to when multi-cellular organisms first began. We are gradually appreciating that the immune system has evolved into a truly brilliant and efficient protective mechanism, the importance of which we are just beginning to now comprehend. Understanding these aspects will likely lead to more effective cancer and other therapies.

Keywords

Immune system, evolution, cancer, mutation, immune response, immunosurveillance, immunotherapy

Open Peer Review

Reviewer Status

	Invited Reviewers	
	1	2
version 3 (revision) 27 Jan 2021		
version 2 (revision) 06 Nov 2020	 report	 report
version 1 12 Aug 2015	 report	 report

1. **Jonathan M. Austyn**, University of Oxford, Oxford, UK

2. **Angus Dalgleish**, St George's University of London, London, UK

Any reports and responses or comments on the article can be found at the end of the article.

Corresponding author: Brendon J. Coventry (brendon.coventry@adelaide.edu.au)

Author roles: **Coventry BJ:** Conceptualization, Formal Analysis, Funding Acquisition, Investigation, Methodology, Validation, Visualization, Writing – Original Draft Preparation, Writing – Review & Editing; **Henneberg M:** Conceptualization, Formal Analysis, Investigation, Methodology, Validation, Visualization, Writing – Original Draft Preparation, Writing – Review & Editing

Competing interests: The authors declare that they have no financial or non-financial competing interests, nor any conflicts of interests.

Grant information: This work was supported in part by NIH grant U54 CA143682.

Copyright: © 2021 Coventry BJ and Henneberg M. This is an open access article distributed under the terms of the [Creative Commons Attribution License](#), which permits unrestricted use, distribution, and reproduction in any medium, provided the original work is properly cited.

How to cite this article: Coventry BJ and Henneberg M. **The Immune System and Responses to Cancer: Coordinated Evolution [version 3; peer review: 2 approved]** F1000Research 2021, 4:552 <https://doi.org/10.12688/f1000research.6718.3>

First published: 12 Aug 2015, 4:552 <https://doi.org/10.12688/f1000research.6718.1>

REVISED Amendments from Version 2

Martin Ashdown - who co-authored the initial version of this manuscript – did not contribute to the most recent version of this article and has therefore been removed from the author list for this version.

Paul CW Davies contributed to the updated section on cancer cell evolution & approved it, but did not wish to be listed as an author on Version 2 or 3.

Several small changes have been included to address suggestions made by the reviewers, including an illustrative timeline.

Any further responses from the reviewers can be found at the end of the article

Introduction and Overview

It often goes unappreciated that the adaptive immune system developed hundreds of millions of years ago, and has evolved into a truly efficient protective mechanism, the importance of which we are just beginning to now understand in science and medicine. Acute immune responses have developed and evolved alongside infection and genetic diversity, as part of the entire evolutionary process of matching organism against organism. There has been a continuous development of the immune system's capacity to protect an organism against infections through rapid genetic somatic mutations that also led to a dynamic, intricate interplay between genetic endowment and somatic mutations. The immune system acts as an ultimate high fidelity 'read-out' for cellular genetic change, detecting cellular aberration at the molecular level in its very early stages as it develops, to remove or destroy aberrant cells. Such aberration arises from infection of cells by viruses, bacteria or other microbes, and from DNA damage, failed repair mechanisms, mutagens, carcinogens including UV light, toxins and other chemicals, and from cellular damage and ageing, thus embracing a wide variety of mechanisms causing cellular aberration. Aberration is detected by a variety of innate non-specific immune mechanisms through damage (or danger)-associated molecular patterns (DAMPs) that are released in response to trauma or injury to tissues, such as heat-shock proteins (HSPs) when cancer cells are injured; and also pathogen associated molecular patterns (PAMPs) which are a variety of molecules associated with (extrinsic) pathogens usually recognized by the innate immune system through pattern-recognition receptors (PRRs), such as toll-like receptors (TLRs) which include bacterial lipopolysaccharides, glycoconjugates, viral proteins and endotoxins. This might explain why addition of bacterial or viral antigens to cancer microenvironments (naturally or therapeutically) is observed to trigger successful adaptive immunity by supplying a suitable 'danger signal' in some situations. It is unclear whether the immune response is against the pathogen signal primarily, with secondary tumour killing; or drives forward augmenting a pre-existing immune response against the cancer antigens by releasing inhibition. The recent anti-PD-1 data would suggest the latter¹.

Many pathogens contain intrinsic danger signals, due to an evolutionary adaptation selected-for over millions of years, capable of inducing an immune response in animal and human

immune systems. Constant dynamic interaction occurs between cells and the immune system to preserve homeostasis. Because the rate of mutation during cell division and tissue turnover far exceeds the rate of malignant tumour diagnosis, the immune system must serve in detecting and eliminating aberrant and frankly malignant cells at a developmentally early stage. MacFarlane Burnet proposed active immune surveillance occurs to detect cancer cells and virally infected cells to remove them from the body²⁻⁷. However, the fact that cancer does occur in humans and animals indicates that the process of detection and removal of malignant cells is not completely efficient. The reason for cancer persistence likely resides with observations that in the chronic state of antigen persistence the immune system continually appears to repeatedly 'close itself down' to avoid over-activation and to conserve energy. In the acute state, with exposure to each new pathogen the immune system responds rapidly over several days and then typically retains 'memory' of that encounter, enabling more rapid responses upon subsequent exposure. If the antigen can be acutely removed from the system, the immune system returns to its steady basal state via homeostatic mechanisms. However, if the antigen persists and cannot be removed from the organism, the immune system responds again and again with further cycles of activity. Over-reactivity is limited by eliciting an inhibitory response after each activation response, in the form of negative feedback for biological homeostatic damping. This cyclic feedback phenomenon is seen right across many, if not all, biological systems in nature. In the chronic state, the immune system repeatedly activates in response to persistent antigenic signals. When the antigenic signal cannot be removed with a second 'round' of activation, another cycle of activation and then inhibition occurs. This repetitive cycle continues until the antigenic focus is eventually removed, or the organism dies. Although this is an efficient system in the acute setting, in the chronic setting where the problem persists indefinitely and does not appear to resolve, 'chronic inflammation' can arise which is often far less energy efficient. Vast amounts of energy can be consumed in chronic severe inflammatory conditions¹. In areas of the world where infection has been effectively reduced by sanitation and other public health measures, non-infectious chronic inflammatory diseases have emerged as the major causes of morbidity and mortality. Clinically, this manifests as a relapsing and remitting process, often with malaise and weight loss characteristic of many chronic illnesses. The 'immunological damping', although on one hand offering some anti-inflammatory advantage, results in rather maladaptive processes which consume excessive amounts of energy, that may damage surrounding tissues and cells. The relapsing and remitting phenomenon is widely observable in states including chronic infections, chronic inflammatory diseases (like rheumatoid arthritis, thyroiditis and multiple sclerosis), and cancers. Over a number of generations, natural selection has led to efficiency improvements of immune responses. For instance, some specific chronic infections through co-adaptation of hosts and pathogens allowed normal (asymptomatic) functioning of most infected individuals; examples are endemic treponematoses⁸⁻¹⁰ or tuberculosis^{11,12}.

This article considers the immune system more widely and relates cancer immunology in terms of the symbiotic evolutionary

relationships between the immune system, somatic cell evolution, microbial pressure and chronic inflammation.

Developmental Importance, Genome Diversity and Evolutionary Change

The immune system functions diversely across many organs to protect and maintain health. Importantly, the host's immune system can regulate the genomic integrity across species and generations. Protection extends to all body barrier interfaces between the external and internal environment, where invasion of microbial agents is prevented or dealt with. The protection also acts against deleterious somatic mutations of host cells. The immune system is vital for maintenance of the health of all other body systems.

Essentially, the process of DNA-based evolution, besides adapting organisms to their physical environments, has pitted organism against organism in the quest for ultimate survival. According to Darwinian principles, the surviving organisms are the most successful in their reproduction either by conquering and terminating competing organisms, or in reaching symbiotic balance with them. That process requires protection of host DNA and also facilitates relatively rapid genomic constitutional adaptation by acquiring and modifying useful DNA from the environment¹³. Indeed, the organism's DNA is added to, modified and diversified to keep ahead of the 'genetic superior adaptability game' by mutation, plasmid transfer, viral transduction, mitotic translocations, and meiotic acquisition to allow its successful reproduction. The immune system undergoes constant modification of innate and adaptive immunity with exposure to antigenic stimuli both at the individual and the population levels.

The mammalian immune system represents one of the final (to date) central arbiters over the course of human Darwinian evolution. Many of the advances necessary for human adaptation have been moderated, directed and shaped by the influence of the immune system. Most fundamentally, the defense against infection and therefore survival of individuals to permit reproduction, is underpinned by immune system function. Less obvious, though equally fundamental, is the role of the immune system in maintenance of the organism's homeostasis through removal of cells whose somatic mutations made them deleterious or disadvantageous. Natural selection applies not only to the successful reproduction of entire organisms, but also to the clonal reproduction of cell lineages, both cancer and immunological, within an organism¹⁴.

The genes coding for the hypervariable regions of the antibody molecule and the genes for the variable regions of the T-cell receptor, mutate at a much faster rate than somatic genes under usual environmental pressure. The critical process of V(D)J gene recombination during T and B lymphocyte development randomly assembles different gene segments – named variable (V), diversity (D) and joining (J) genes, to generate immunoglobulin molecules and T cell receptors that can recognise antigens to which either the host or its genetic ancestors might

have had exposure permitting binding and responsiveness to both new or changing antigens. These processes allow for more diverse binding patterns for antigens by both antibodies and T-cell receptors, which has significant immune adaptational advantage^{15,16}. Somatic mutation on the other hand is a relatively slow process where genetic changes through (often) weaker selection pressures on survival and reproduction usually require some generations of cell divisions and progeny. These, changes, however, perceived as "millennial" can happen over just a few generations^{17–19}. The immune system genes, however, constantly rapidly mutate in order to generate diverse conformations capable of binding the multitude of antigens to which an individual is exposed. Many of those antigens might be associated with threat and danger, for example, from microbial invasion. Examples of the somatic hypermutation process in B-cells are antibody class switching, and hypermutation of the genes for the variable regions of immunoglobulin molecules permitting the rapid antibody recognition of new foreign antigens with different molecular shapes. The immune system design has necessarily evolved, through continuous successive approximation, to detect subtle molecular cell surface aberrations. This occurs through both non-specific, and specific B- and T-cell, mechanisms in an elegantly integrated manner.

How the Genome Monitors Itself and Evolves

Somatic changes of organisms generally occur at a gradual pace of varied rates as part of the slow, but effective, evolutionary process through such mechanisms as random mutation, natural selection and viral infection. For example, human morphological characteristics, like stature, brain size and tooth size change at rates ranging from 0.3 darwins to 65 darwins¹⁷. Microbial DNA sequences, for example from retroviruses like HIV, Herpes viruses and *Mycobacterium tuberculosis*, have been identified in the human genome, and these genes must have been structurally incorporated over time from repeated exposure, interaction and exchange between mammalian and microbial DNA^{20,21}. Human Endogenous Retroviruses (HERVs) are estimated to make up to 8% of the human genome, though fragmented and replication incompetent, it bears testament to long and intimate genetic interactions between a parasite with a few genes and 10,000 nucleotides, and a host of some 22,000 genes and some 2.85 billion nucleotides^{22–24}. Interestingly, the (uninfected) C57 black mouse has several whole genomic copies of the LMP56 retrovirus in its germline²³. Clearly, the retrovirus became inserted into the murine genetic complement in the mammal's evolutionary past^{23–27}. When infected with the virus in the experimental situation, the mouse develops a chronic immunodeficiency disease, the clinical course of which parallels HIV/AIDS in humans²⁸. It is now suggested that this chronic disease state is due to the murine immune system failing to differentiate between self and non-self, such that it homeostatically attenuates or down-regulates the immune response against the virus *in vivo*^{29,30}. Failure to resolve the disease is due to persisting viral (self) antigens. The experimental similarity to the immune response in murine cancer models is strikingly compelling. In the case of cancer in the mouse the persisting antigens are due to the growing cancer which appears to exert a similar attenuating effect³¹.

Over the millennia the constant exchange of genetic material between host and environmental microorganisms has offered incremental adaptive advantage to both organisms (host-pathogen adaptation), but in fundamentally different ways, perhaps comprising the ultimate symbiotic relationship, since both have evolved and survived³². There remains a debate over whether the presence of microbial DNA is the result of incorporation or failed gene loss of inherited genes as evolution has occurred^{33–36}. However, many microorganisms can expand rapidly, possess mechanisms for evasion of host defences, and can mutate at a rate that far outpaces somatic evolutionary change via much faster division/reproduction rates. This may explain the immune system's evolved ability to match these rapid microbial mutational rates to more effectively neutralize them via innate mechanisms, antibody production and cellular responses. Examples are the microorganisms that rapidly expand and produce outbreaks of disease in humans, animals (from insects to mammals), and, plants, sometimes with transmission across species. Rapid, immediate 'revolutionary' adaptive change is advantageous to keep the immune system ahead of microbial mutation, virulence and growth³⁷. To oppose mutated, infected and otherwise aberrant cells, the immune system has a number of adaptive and protective mechanisms. These include somatic hypermutation genes for generation of hypervariable region binding domains for antibody molecules produced by plasma (B-) cells, and for the process of genetic recombination by T-cells forming the variable regions of T-cell surface receptors for rapid response to antigen exposure. In this way, adaptive immune responses can rapidly generate multiple molecules with variable affinity for binding whole or fragmented antigens. An analogy would be 'random number generation' to break undeciphered digital codes, or in contemporary terms to 'hack into' a computer system across encrypted firewalls^{38–40}.

Without adequate host organism defence, infection would cause cellular damage and death. Humans are estimated to harbour some 10^{14} microbes, mostly bacteria, while we consist of only 10^{13} mammalian cells^{41–43}. It might therefore be argued that in a cellular sense we are more bacterial than mammalian in constitution. The human body, like any other multicellular organism, should be treated as a complex ecosystem whose balance is dynamically maintained by feedback interactions amongst its parts.

To understand the human immune system, we must appreciate that each facet of the immune system has evolved concurrently as life itself has evolved. The mammalian genome, therefore constantly monitors itself through the actions of the immune system, both non-specific and adaptive. This is in order to achieve a state of evolving homeostasis to achieve progressive protection of the genome, and of cellular and tissue function, as the environmental, microbial and other pressures continually change.

History of Immune System Development and Cellular Aberration

Life on earth commenced between 3 and 4 Ga (giga or billion years ago; $3\text{--}4 \times 10^9$ years) as unicellular organisms (fungi, bacteria and viruses) adapted to survive environmental hazards

through rapid reproduction, colony formation and repopulation. At some 1.2 Ga algal mats developed as the first multicellular organisms, and then about 1 Ga more complex chlorophyll-containing organisms evolved. About 450 Ma (mega or million years ago) even more complex plants developed and acquired fundamental innate static immune systems largely through intracellular anti-microbial molecules to resist infection principally from existing fungi, bacteria and viruses.

Recent studies indicate that sponges and other invertebrates developed both innate and adaptive immunity at around 800 Ma ago so that from that period marine sponges, coelenterates, gastropods (snails & slugs) and helminths (worms) possessed the ability for allograft rejection, indicating distinction between self and non-self^{44,45}. A further advance in adaptive immunity developed with vertebrates around 450 Ma in primitive fish and amphibians, and with reptiles, about 300 Ma, this evolved rapidly for protection against infection.

Mammalian life began about 120 Ma, with immune system evolution to meet the need for local and systemic protection from invasive microorganisms, and with placentation³². Indeed, for effective adaptive symbiosis the mammalian immune system must have developed evolutionary tolerance for specific microorganisms since some organisms conferred adaptive advantages and others did not. A part of these adaptations may have been inherited from therapsid ancestors.

In contrast to the 3–4 billion years of immune system evolution, for only a mere 60 years or so, humans have more intensively investigated the immune system and its intricate interplay between non-specific (innate) and more specific (adaptive) immune mechanisms for fundamental evolutionary and developmental advantage (Figure 1). Often viewed as separate arms of the immune response, it is clear that they are rarely mutually exclusive or separate. The 'artificial' division arose for experimental explanatory research reasons, rather than physiological ones, but both are inextricably inseparable.

Genomic intrinsic mutational phenomena and exogenous infection of cells are significant forces capable of exerting phenotypic change to produce cell membrane 'aberration'. During cellular transformation to dysplasia, metaplasia and malignancy, cell membrane changes are detectable. Since gene mutations occur about 1 in every 10^6 cell divisions, the risk of cellular aberration is high in rapidly dividing tissues, with some leading to malignant transformation. The immune system is the only system capable of high-level detection and action, and must therefore detect aberrant cells early and remove them exceedingly effectively and efficiently, otherwise, the rates of cancers would exceed that observed clinically. About 10^6 cells form a 5mm diameter tumour mass from some 30 divisions (assuming a regular process applies).

Progressive exposure to environmental antigens in-utero, during infancy and subsequently, ultimately leads to acquisition of a very individual repertoire of antigens for which immunological tolerance and memory are established, thus shaping the immune system over time with the maturity of the individual

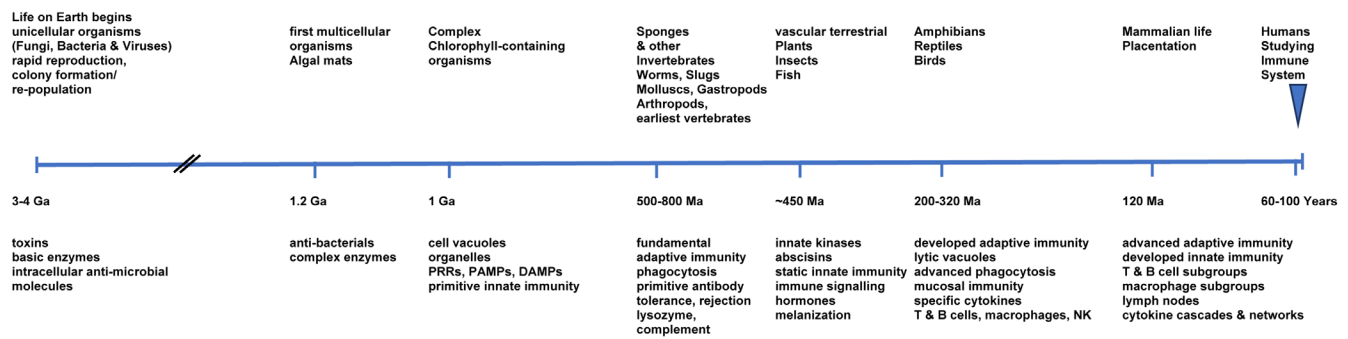


Figure 1. Timeline of estimated and known evolutionary developments of Life on Earth, and parallel changes in development of the immune system components [Ga = Giga/ billion / 10^9 years; Ma = Mega/ million / 10^6 years; PRR = pattern-recognition receptors; PAMPs = pathogen associated molecular patterns; DAMPs = damage (or danger)-associated molecular patterns; NK = natural killer cells]. Note: representative non-linear timeline scale.

enhancing adaptive immunity and survival. Recent data indicate that early antigenic exposure, including through the microbiome, transplacentally and during infancy is related to antigen tolerance and that lack of exposure is associated with higher allergic sensitisation and atopic reactions. There is also evidence that the level of antigen exposure (dose) is important in induction of T-cell responses and tolerant states to antigens^{46,47} and that progressive sensitisation with small repetitive doses of antigen can induce (variable) tolerance to serious peanut and bee-sting allergy⁴⁸⁻⁵², with some relevance to the breaking of immune tolerance to cancer^{1,53,54}.

The link between the extent of environmental exposure to antigens shaping and developing the immune system and the incidence of disorders such as chronic infections, allergy and cancer has been extensively discussed⁴⁹⁻⁵⁴ and remain topics of considerable on-going interest.

Fundamental Reactivity to Aberrant Antigens

Aberrations, arising from multiple events such as infection of cells, cellular injury, trauma, ageing or from genetic mutation, are reflected by cell surface expression of aberrant proteins, lipids (especially glycolipids) and carbohydrates. Detection of aberration through both non-specific and specific adaptive mechanisms is essential for destruction and removal of abnormal cells to restore tissue integrity. Membrane profile alterations from normal to dysplastic and malignant transformation are evident using magnetic resonance spectroscopy⁵⁵⁻⁵⁷. The immune system is carefully tuned to detect relatively subtle changes in proteins through the standard HLA systems via Class I and II molecules, and the far less explored CD1 system for the detection of lipid, glycolipid and carbohydrate molecules⁵⁸. In addition, the Fc receptor mechanism of the non-specific arm of the immune system detects foreign and altered cells. Activation of granulocytes, macrophages, B-cells and T-cells pushes the immune system in one direction or in the other, producing either overall responsiveness/activation, or inhibition/tolerance. Increasingly, it is being appreciated that almost all levels of the immune system can either respond or inhibit, providing a certain redundancy at multiple levels

of control. Therefore, infected, damaged or malignant cells can be either actively eliminated or tolerated. Clinically, this is precisely what is observed, in a variety of infections and malignancies. Indeed, chronic inflammatory states have emerged as the predominant illnesses affecting many individuals, including persistent infections, autoimmunity and malignancy. Diseases such as cancer, cardiovascular disease and diabetes are now appreciated as chronic persistent inflammatory states, capable of modulation by factors such as anti-inflammatory medication and immune modulation.

Evolutionary Roots of Cancer

In recent years there has been increasing interest in cancer as a biological phenomenon found across almost all multicellular species⁵⁹ suggesting deep evolutionary roots dating back to the dawn of multicellularity. The transition from unicellularity to multicellularity occurred several times starting over one billion years ago, although evolutionarily modern multicellular organisms with a large variety of cell and tissue types did not emerge until the Ediacara and Cambrian eras <600 million years ago. In 1929, Boveri⁶⁰ proposed that cancer represents a type of atavism or reversion to a more primitive ancestral phenotype. This general idea has now been widely confirmed using phylostratigraphy to study the evolutionary ages of cancer genes. It is generally recognized that the genes responsible for cellular cooperation in multicellular organisms (e.g. signalling, adhesion, angiogenesis, migration) are precisely those genes that are corrupted in cancer and lead to loss of regulatory function⁶¹⁻⁶³.

In a series of papers⁶⁴⁻⁶⁸, Boveri's idea of cancer as a type of atavism has been developed into a detailed theory of cancer onset and progression, which makes many quantitative predictions testable using phylostratigraphy.

It has long been recognized that there is a close link between cancer and early-stage embryogenesis⁶⁹⁻⁷¹ which makes sense in the context of the atavism theory given von Baer's 1828 so-called 4th law of embryology: "The embryo of a higher animal form never resembles the adult of another animal form, such

as one less evolved, but only its embryo.” Although ‘law’ is an overstatement, Haeckel’s much-criticised 1866 aphorism ‘ontogeny recapitulates phylogeny’ is nevertheless still a useful guide⁷², and supported by evidence that complex interactions between genes, cells and developmental processes peak during mid-embryogenesis when the basic body plan of the organism is being laid down⁷³. The atavism theory predicts that as cancer progresses, cells de-differentiate towards ‘stemness’ and in a general sense resemble more closely the cells of both early stage embryogenesis and the unicellular world.

Phylostratigraphic analyses relevant to cancer began with the pioneering work of Domazet-Lošo & Tautz⁷⁴. They assigned ages to ‘cancer-associated genes’ from several cancer gene compilations and found two peaks where cancer genes are over-represented compared to the age distribution of all human genes. One was in the pre-eukaryote unicellular era. The other correlated with the origin of multicellularity and metazoa. The most important finding was the under-representation of cancer-associated genes younger than about 400 million years, confirming the basic notion that the evolutionary roots of cancer are very ancient.

Chen *et al.* set out to test the atavism model by examining xenograft human breast tumours in mice and characterized the complete evolutionary history of a tumour⁷⁵. The expression profiles were found to evolve towards that of embryonic stem cells. The most highly mutated and consistently downregulated genes in the metastatic samples were enriched in functions related to multicellularity. In another analysis, the phylogenetic tree of Tyrosine Kinases (TKs), which compose a major portion of oncogenes, demonstrated “a general trend of atavism in tumourigenesis”⁷⁶. Studies by Wu *et al.* of multiple myeloma evolving in a microfabricated ecosystem also supported the general thesis that “cancer represents a reversion back to ancient forms of life”⁷⁷.

An Australian group applied phylostratigraphy to RNA transcript sequencing data from The Cancer Genome Atlas for seven solid cancers, using 16 age categories⁷⁸. Consistent with Domazet-Lošo & Tautz⁷⁴, they found significant patterns in the relationship between gene age and expression levels in cancer. Genes of unicellular evolutionary origin are over-expressed in human cancers, whereas genes appearing at multicellular stages are down-regulated. The over-expression of unicellular genes was associated with major dysregulation of the control structures imposed on unicellular processes during the evolution of multicellularity. Significantly, Trigos *et al.* found that the atavistic signature was not a simple re-primitivisation to unicellularity. Rather it is a rewiring of the coupling between the gene networks that control unicellular processes from those that control multicellular processes⁷⁹. Their results thus provide evidence that cancer is a nuanced reorganization of the relationship between the unicellular and multicellular domains. A key prediction of this theory is that the reversionary sequence is systematic and should display regularities across species and across cancer types.

Zhou *et al.*⁸⁰ examined transcriptomes to compare differential gene expression between normal and cancer cells, and between embryonic and mature epithelial cells. Starting with 11 phylostrata, they made 5 age bins: LUCA, Eukaryota, Metazoa, Vertebrata, Primata, and then reduced these to two bins: pre-metazoan and post-metazoan. They found that compared to normal cells, cancer cells were enhanced in pre-metazoan and depleted in post-metazoan gene expression. Compared to embryonic cells, differentiated epithelial cells were enriched in post-metazoan expression. Their summary: “These findings support the atavism theory that cancer cells manifest the reactivation of an ancient ancestral state featuring unicellular modalities.”

Using phylostratigraphy, Cisneros *et al.*⁸¹ found that recessive cancer genes older than 900 million years are homologs of the ancient genes in bacteria that turn up mutation rates when the cells are stressed—suggesting that the well-known genomic instability of cancer can be interpreted as a reversion to an ancient prokaryotic stress response, a phenomenon recently confirmed by the analysis of Cipponi *et al.*⁸² showing mTOR (mammalian target of rapamycin) signaling orchestrates stress-induced mutagenesis, facilitating adaptive evolution in cancer.

The retention over evolutionary time scales of a DNA repair mechanism that *increases* the mutation rate in response to cellular stress may seem counter-intuitive. One reason is that the generation of somatic genome diversity is critical to the functioning of the immune system via somatic hypermutation of V regions to generate antibody diversity⁸³. Somatic genome diversity is also implicated in the implementation of polyploidy in megakaryocyte development⁸⁴, and the appearance of tetraploidy in normally functioning liver and cardiac tissues⁸⁵.

Cancer is conveniently characterized as displaying a set of distinctive hallmarks⁸⁶ which represent both gain and loss of function. Significantly, cancer does not evolve the hallmark properties *ab initio*; neoplasms merely appropriate pre-existing modalities latent in the genome^{75,87}, retained because they play critical roles in key processes such as genetic diversity, embryogenesis, tissue maintenance and wound healing^{71,88}.

A central prediction of the atavism theory is that there should be definite patterns in the direction, order and timing of both the loss and gain of function as cancer progresses, occurring via a sequence of increasingly malignant transformations⁸⁹. Cancer progression should roughly correlate inversely with the chronological sequence in which the relevant cancer genes evolved phylogenetically. By contrast, Hanahan & Weinberg (2015) remark: “The order in which these hallmark capabilities are acquired...appears to vary across the spectrum of human cancers.” Thus, the existence of non-randomness in hallmark acquisition provides a useful test to discriminate between the atavism theory and the prevailing somatic mutation theory. Evidence for the non-random nature of hallmark acquisition has been identified by Lineweaver and Chopra⁹⁰.

A well-known hallmark of cancer is its ability to evade or block the adaptive immune system, a feature that forms the basis of immunotherapy. Given the relatively young evolutionary age of adaptive immunity (< 500 million years), the atavism theory predicts that adaptive immunity should be lost soon after the onset of tumorigenesis⁶⁵. Another familiar hallmark is the default in cancer metabolism to anaerobic glycolysis even in the presence of normal oxygen tension, a phenomenon known as the Warburg effect⁹¹. Glycolytic metabolism is well adapted to hypoxic environments of the sort encountered in tumours, but was also the normal circumstance for life before the great oxygenation event about 800 million years ago. By upregulating the Warburg effect, cancer can be regarded as reverting to the ancient hypoxic roots of early multicellular life. Indeed, it has been argued by Vincent⁶⁵ that cancer engineers its tissue microenvironment to recreate congenial atavistic niches in which neoplasms can flourish in competition with healthy cells.

The atavism theory has important implications for therapy⁶⁵. The history of the interaction of bacteria, viruses and cancer is a very long and somewhat confused one, since William Coley obtained some notable clinical results over a century ago⁹². Some infections will boost the immune system and bring additional pressure on cancer cells, but some agents will directly infect the cancer cells preferentially in their immunosuppressed niches, for example oncolytic viruses. A variety of new approaches^{1,93–99} to immunotherapy exploits these features. The atavism theory predicts that advanced cancer will be particularly vulnerable to certain infectious agents, and specific treatment regimes have been advocated to take advantage of that aspect⁶⁵.

We also note that, taking into account the discovery of stress-induced mutagenesis – a very ancient stress response found in bacteria and pre-dating multicellularity – the practice of maximum tolerable dose for chemotherapy is likely to be counterproductive. It risks provoking an elevation of the mutation rate (another hallmark of cancer), thus facilitating the ability of the neoplasm to evolve drug resistance. Instead, a more measured and nuanced treatment regime is likely to be more efficacious.

Contemporary Cancer Evolution

Not only is there an evolutionary past of considerable longevity, but the tumour deposit itself has frequently been demonstrated to have wide genetic heterogeneity arising from the initially clonal multi-cellular growth, and moreover different metastases show considerable heterogeneity between them. It is therefore evident that the ‘cancer’ is not truly clonal, but represents a mix of cells resulting from genetic instability with different genetic profiles, which the immune system must recognise in order to react to remove the constituent cancer cells within the tumour mass(es)^{100–104}. Cancer phenotype has been proposed as an evolutionary interaction between normal and malignant cells¹⁰⁵, and furthermore, recent evidence indicates that the hierarchical structures in normal host tissues are structurally mirrored in a very similar way by tumour tissues¹⁰⁶. Additionally, mathematical models have been developed to investigate how de-differentiation of tumour cells

appears to be an adaptive mechanism actively selected-for to permit invasion into cellular hierarchies¹⁰⁶.

Homeostatic Regulation of Immune Reactivity and Cancer

The relapsing and remitting behaviour of many chronic inflammatory states, such as arthritis, inflammatory bowel diseases, multiple sclerosis, and thyroiditis is well recognised. Diabetes, cardiovascular diseases and cancers of all types are now being considered similarly. The fluctuating, oscillating nature of these diseases has largely confounded our understanding to date and remained frustratingly unexplained, but is indicative that the immune system must be repeatedly transitioning between stimulation/activation and suppression/tolerance phases repeatedly to produce the observed clinical picture. Moreover, oscillatory behaviour is highly characteristic of any homeostatic biological system under negative feedback control. This cyclical dynamic is a physical expression of physiological control to maintain relative constancy of the *milieu intérieur*, as recognised by Claude Bernard around 1867, and later by Walter Cannon. Physiological constancy, or homeostatic control, of the body's immune status requires proportioned synchrony between effector stimulation *and* regulatory functions to be operational. Many cyclical examples, such as the diurnal temperature cycles, peri-monthly menstrual cycles, and 24-hour cortisol cycles have been elucidated by close serial monitoring. The fluctuating pattern in these situations defines the “set-point” which that specific physiological parameter is maintained at to define the mean and standard deviation of that variable.

The association between cancer and the host immune response has been recognised for over a century^{107–112}. In animals, North *et al.*'s group^{113–121} and more recently Klatzmann *et al.*'s group¹²², demonstrated that the timing of delivery of cytotoxic agents after tumour transplantation was crucial in determining whether tumour regression occurred or not. Early clinical observations of inflammation and cancer regression were made by those treating cancer^{107–110}, particularly the development of infection/fever after surgery. Chronic inflammation has long been associated with cancer development, for example chronic ulceration and Marjolin's squamous cell cancer of the skin.

The immune system has innate and adaptive arms. Chemicals are released into the serum during inflammatory responses and can be used as clinical and laboratory markers of the presence and strength of inflammation. These can be used to infer the rate of increase or decrease of inflammation that is occurring at the time and are dependent on the half-lives of the relevant marker(s), and often other factors such as organ function. Acute phase markers include C-Reactive Protein (CRP), serum amyloid A, complement factors, ferritin, ceruloplasmin, erythrocyte sedimentation rate, white blood cell count, haptoglobin, immunoglobulin and a range of cytokines released into the serum and/or tissue. Many of these tests are routinely used clinically for measurement of inflammation and for monitoring of treatment and disease progression.

One of the easiest to measure, is the relatively reliable and clinically widely useful acute phase marker CRP, a

non-specific functional analogue of immunoglobulin that binds to self/non-self cellular breakdown products of inflammation to initiate the adaptive immune responses^{123,124}. T & B cells respond to cellular changes due to infection, damage or mutagenesis. To fine-tune and limit these responses, the ensuing immune response is down-regulated paradoxically by the same cytokines and receptors that initiated it, **but** on functionally different cell types. Regulatory T-cells play a major role in this homeostatic attenuation and experimental and clinical evidence has shown that when these cells are either removed or blocked, cancer can completely regress, while autoimmune conditions may develop or worsen¹²⁵⁻¹³⁰.

In recent years, it has become clear that the immune system recognises and processes both self- and non-self antigens to either respond or tolerate the antigen, but that homeostatic balance usually prevails.

Immune responses can therefore be thought of as an oscillating or dual-phase “bi-stable” system existing in either of two principal states (responsiveness or tolerance). Antigen is the

prime mover for either of these two states, and cytokines, most notably interleukin-2 (IL2) as an example (but also including IL-7, IL-10; IL-12; IL-15; IL-17; IL-21; IFN- γ) and other molecules (eg. anti-PD-1, anti-CTLA4), provide the temporal feedback loop to govern the immune response direction. If antigen is continuously supplied to such a system (due to tumour cell growth/ turnover) logic and physiology dictate that this response must oscillate^{123,124,131-134}. Oscillatory systems are characteristic of any homeostatic system with feedback loop(s) (Figure 2).

Not only is the immune response governed by ‘when’ the cytokine or antigen signals are delivered, but also by the strength (how much) of the signal that is delivered. Small quantities of cytokine, IL-2 for example, induces a different effect to a larger quantity of the same cytokine – a point exploited to some degree in IL-2 therapies¹³⁵⁻¹³⁸.

Anti-cancer Agents and Immune Responses

Cytotoxic agents inhibit cell division to therapeutically damage and kill tumour cells. However, cancer cells divide

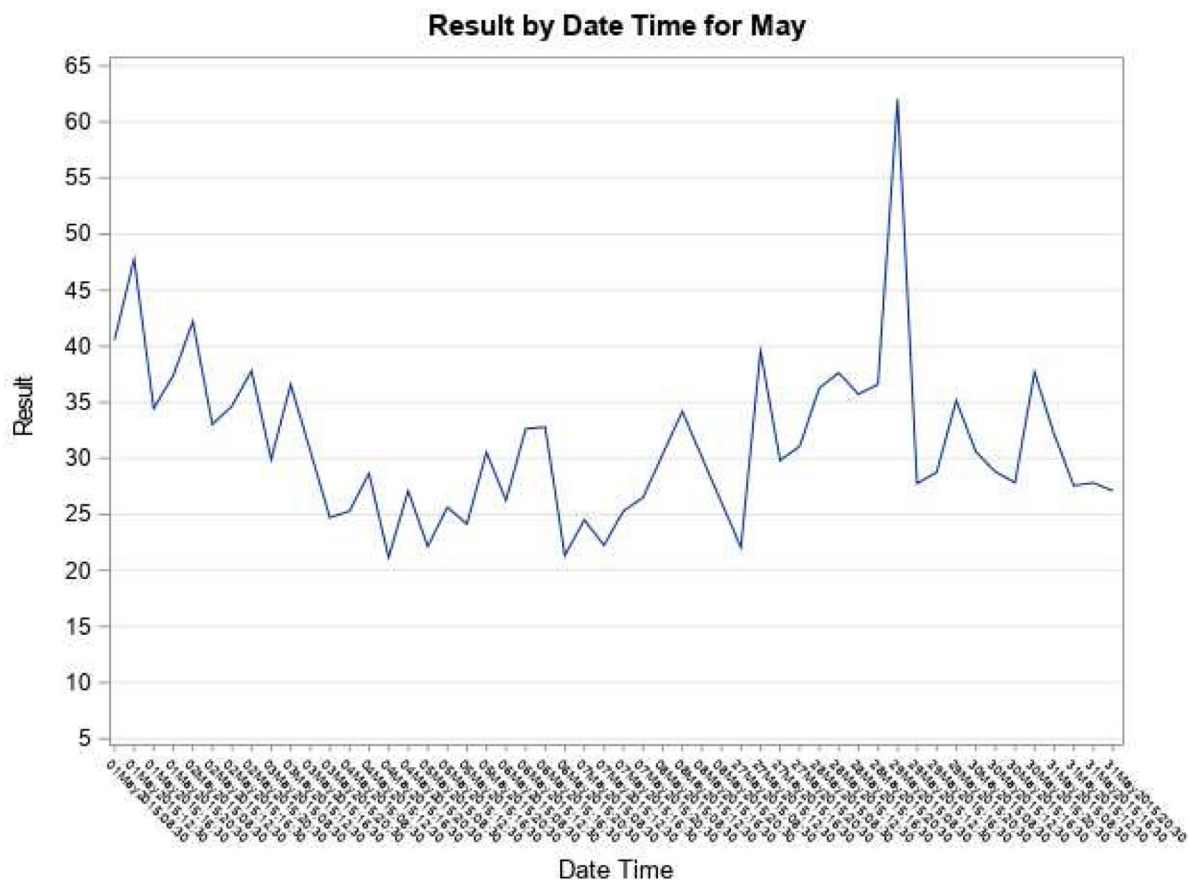


Figure 2. C-Reactive Protein (CRP) Level Fluctuation. An example of CRP oscillatory behaviour in a patient with cancer - an example of the immune system fluctuating with a varying inflammatory response to an antigen stimulus. Several CRP levels (results) were taken each day. Antigen is capable of driving activation or inhibition depending on the strength and timing of the signal input and on operational feedback facilitatory and inhibitory loops, alternately driving both responsiveness and tolerance to create net homeostasis around a set-point mean. Multiple cytokines (eg. IL-2, IL-7, IL-10; IL-12; IL-17; IL-21; IFN- γ) and other molecules (eg. anti-PD-1, anti-CTLA4, antigen) have the capability of either activating or inhibiting immune responses, so are bi-functional.

asynchronously. About 20–30% of malignant cells within many solid cancers are dividing at any one time-point (greater rates of division occur in some cancers such as childhood leukaemia, choriocarcinoma and testicular carcinoma). Regimens have evolved often with weekly dosing of sequential ‘lines’ (1st, 2nd, 3rd etc) of therapy or in combinations. Repetitive dosing of agents inducing multiple cycles of cell damage and antigen release (vaccination events) from the tumour is emerging as highly significant^{1,54,123,131}.

Cells of the immune system rapidly divide, but they usually divide synchronously and the arms of the immune response proliferate alternately (effector then regulatory) at different times sequentially to initiate then reduce an immune response over time^{123,124,131–134}.

Cytotoxic agents, as well as desirably ablating actively dividing cancer cells, unless applied discriminately, are capable of ablating different groups of proliferating immunological cells, including proliferating effector T-cells.

It is now clear that the immune system is not ignorant to the presence of tumours, that it does recognise tumour antigens, and that the normal homeostatic regulatory mechanisms suppress active anti-tumour immune responses, and are at the seat of the problem. This explains why immuno-modulatory agents, such as IL2, and CTLA4, PD1/L1 monoclonal antibodies can deliver random dramatic complete responses in a limited percentage of late-stage cancer patients by releasing the pre-existing homeostatic suppression/tolerance^{1,125–130}. All of these immunotherapeutic agents can induce immune activation, but can also induce immune tolerance. The lack of efficacy of these agents in most patients is explained by induction of tolerance with some doses via regulatory T-cells while activating with other doses, the net balance of which might determine overall clinical outcome.

The application of immune therapies or cytotoxic chemotherapies to the oscillating and fluctuating immune system occurring in the individual patient presents a significant problem if the action of the specific agent depends on precisely when the agent is administered with reference to the phase of activation or inhibition of the immune system at the time. Recent work has been unable to accurately define the periodicity of the immune oscillation in cancer patients despite initial work using less robust mathematics appearing to show this^{139–142}. Advanced mathematics and periodicity models have been incapable of verifying regular, consistent, clear, regular immune cycles, principally due to infrequent inflammatory marker serial sampling and confounding noise-to-signal issues, but machine (deep) learning may offer alternative methods. On-going work into the oscillatory behaviour of the immune system, especially in advanced cancer patients, may reasonably offer useful opportunity to understand and to forecast or predict treatment intervention more accurately than exists at present¹⁴³.

Improving results of natural selection

Tissues in the body are usually maintained with a very uniform cell composition. Most aberrant cells appearing in the

human body as a result of somatic mutations are detected and disposed of by the immune system. Some are not and can produce pathology, with the majority of clinical cases of cancer occurring in older patients. This is explicable by the fact that natural selection operates principally by differential reproduction, consequently it is unable to operate for selection of biological characteristics in non-reproductive (older) individuals. Thus, over the generations immune responses to malignant cells appearing in young people became adjusted by natural selection and, statistically speaking, operate efficiently, while such responses in older age were not “reachable” by natural selection for genetic adjustment. This principle is not only applicable to specific immune responses, but encompasses the entire regulation of homeostatic balance of an organism. In practical terms, clinical intervention should imitate adaptation by selection of immunological processes occurring in younger organisms, to support, adjust and enhance natural operation of immune systems of older patients. Since the onset of significant clinical interventions about a century ago, death has been reduced such that the operational pressures of natural selection have been relaxed and, as one of the consequences, the incidence of many cancers has increased¹⁹, while concurrently improved treatments have also extended the lives of many patients.

Concluding Remarks and Implications

Although knowledge has deeply developed concerning the immune system and cancer immunology, our contemporary understanding needs to be placed in evolutionary perspective. Our immune systems are the adaptive result of the necessity for defence against persistent selective pressures from environmental microbial pathogens, injury and repair. Over the millennia, the immune system and other body cells have undergone a continuous adaptive symbiotic process of synchronous, coordinated, cooperative, progressive immunological and somatic evolutionary change to provide what we observe today. Gradual evolution of innate and adaptive immunity against infected and aberrant cells now explains many of the observations regarding cancer immunity and clinical responses. It is gradually being appreciated that normal immune regulatory mechanisms are holding back an already primed immune response from selectively killing cancer cells in most, if not all cases, where clinical cancer is present. With an appreciation that immuno-modulation of pre-existing endogenous immune responses appears to occur with most cancer therapies, there is the serious prospect that serial immune monitoring might define optimal time-points for targeted administration of therapies to engineer effective complete clinical responses in a much more predictable, reliable and durable manner in the future¹. Effective treatments may indeed hinge on deep evolutionary immune and cellular mechanisms which likely underpin successful clinical responses. If achievable, increased long-term survival from advanced cancer, with reduced toxicity, might become a reality by harnessing the immuno-modulatory capacity of many currently existing therapeutic agents. The cost savings would likely prove truly enormous¹⁴⁴.

Authors' information

The authorship of Version 1 represented a unique collaboration between diverse disciplines with contributors having backgrounds

and qualifications in cancer surgery, immunology, immunotherapy (BJC), laboratory science (MLA), evolutionary biology, anatomy, anthropology (MH), and the physical sciences, cancer biology (PCWD). BJC & MH updated and rewrote Version 2 and responded to the reviewers comments; we thank PCWD who did not want to be listed as an author on Version 2, but contributed to the section on cancer cell evolution. As such, this work aims to approach the problem of cancer development and immune system recognition/responses uniquely from a scientific evolutionary perspective to explain many of the clinical observations that have been already made to date. Emanating from this understanding, new approaches and therapies might then be fruitfully generated for science and clinical medicine.

List of abbreviations

IL2	interleukin-2
CTLA4	cytotoxic T-lymphocyte associated protein 4
PD-1	programmed cell death protein 1
PD-L1	programmed death-ligand 1
HLA	human leukocyte antigen
CD1	cluster of differentiation 1
DNA	deoxyribonucleic acid
EMT	epithelial-mesenchymal transition
MET	mesenchymal–epithelial transition

mTOR	mammalian target of rapamycin
PS-OC	Physical Science-Oncology Centers
HIV	human immunodeficiency virus
AIDS	acquired immunodeficiency syndrome
HREV	human endogenous retroviruses
Ma	mega/million years
Ga	giga/billion years

Author contributions

BJC devised and wrote the main text; MLA contributed to the initial (Version 1) discussion on HIV/retroviruses and hyper-variable T-cell receptors (now heavily amended); MH contributed to evolutionary discussions; PCWD contributed to cancer cell evolution. All authors prepared, read and approved the manuscript to reach the final (Version 1) content; BJC, MH and PCWD reviewed, edited and approved the manuscript revision (Version 2); *MLA was involved in a minor way with the first version with sections now extensively amended, and not with the latest revised versions (Versions 2 & 3).

Author information

CSO Biotempus Ltd, the institutional affiliation for MA, has gone into liquidation since version 1 of this article was published.

References

- Coventry BJ: **Therapeutic vaccination immunomodulation: forming the basis of all cancer immunotherapy.** *Ther Adv Vaccines Immunother.* 2019; **7**: 2515135519862234.
[PubMed Abstract](#) | [Publisher Full Text](#) | [Free Full Text](#)
- Burnet M: **Cancer; a biological approach. I. The processes of control.** *Br Med J.* 1957; **1**(5022): 779–786.
[PubMed Abstract](#) | [Publisher Full Text](#) | [Free Full Text](#)
- Burnet FM: **Immunological factors in the process of carcinogenesis.** *Br Med Bull.* 1964; **20**: 154–158.
[PubMed Abstract](#) | [Publisher Full Text](#)
- Burnet FM: **The concept of immunological surveillance.** *Prog Exp Tumor Res.* 1970; **13**: 1–27.
[PubMed Abstract](#) | [Publisher Full Text](#)
- Burnet FM: **Immunological surveillance.** Oxford: Pergamon Press; 1970.
[Reference Source](#)
- Burnet FM: **Immunological surveillance in neoplasia.** *Transplant Rev.* 1971; **7**: 3–25.
[PubMed Abstract](#) | [Publisher Full Text](#)
- Ribatti D: **The concept of immune surveillance against tumors. The first theories.** *Oncotarget.* 2017; **8**(4): 7175–7180.
[PubMed Abstract](#) | [Publisher Full Text](#) | [Free Full Text](#)
- Hackett CJ: **On the Origin of the Human Treponematoses (Pinta, Yaws, Endemic Syphilis and Venereal Syphilis).** *Bull World Health Organ.* 1963; **29**(1): 7–41.
[PubMed Abstract](#) | [Free Full Text](#)
- Hackett CJ: **An introduction to diagnostic criteria of syphilis, treponarid and yaws (treponematoses) in dry bones, and some implications.** *Virchows Arch A Pathol Anat Histol.* 1975; **368**(3): 229–41.
[PubMed Abstract](#) | [Publisher Full Text](#)
- Baker BJ, Crane-Kramer G, Dee MW, et al.: **Advancing the understanding of treponemal disease in the past and present.** *Am J Phys Anthropol.* 2020; **171**(Suppl 70): 5–41.
[PubMed Abstract](#) | [Publisher Full Text](#)
- Holloway KL, Henneberg RJ, de Barros Lopes M, et al.: **Evolution of human tuberculosis: a systematic review and meta-analysis of paleopathological evidence.** *Homo.* 2011; **62**(6): 402–58.
[PubMed Abstract](#) | [Publisher Full Text](#)
- Holloway KL, Staub K, Rühli F, et al.: **Lessons from history of socioeconomic improvements: A new approach to treating multi-drug-resistant tuberculosis.** *J Biosoc Sci.* 2014; **46**(5): 600–20.
[PubMed Abstract](#) | [Publisher Full Text](#)
- Alizon S, de Roode JC, Michalakos Y: **Multiple infections and the evolution of virulence.** *Ecol Lett.* 2013; **16**(4): 556–67.
[PubMed Abstract](#) | [Publisher Full Text](#)
- Greaves M, Maley CC: **Clonal evolution in cancer.** *Nature.* 2012; **481**(7381): 306–13.
[PubMed Abstract](#) | [Publisher Full Text](#) | [Free Full Text](#)
- Market E, Papavasiliou FN: **V(D)J Recombination and the Evolution of the Adaptive Immune System.** *PLoS Biol.* 2003; **1**(1): e16.
[PubMed Abstract](#) | [Publisher Full Text](#) | [Free Full Text](#)
- Roth DB: **V(D)J Recombination: Mechanism, Errors, and Fidelity.** *Microbiol Spectr.* 2014; **2**(6).
[PubMed Abstract](#) | [Publisher Full Text](#) | [Free Full Text](#)
- Henneberg M: **The rate of human morphological microevolution and taxonomic diversity of hominids.** *Studies in Historical Anthropology.* 2006; **4**: 49–59.
[Reference Source](#)
- You WP, Henneberg M: **Type 1 diabetes prevalence increasing globally and**

- regionally: the role of natural selection and life expectancy at birth.** *BMJ Open Diabetes Res Care.* 2016; **4**(1): e000161.
[PubMed Abstract](#) | [Publisher Full Text](#) | [Free Full Text](#)
19. You W, Henneberg M: **Cancer incidence increasing globally: The role of relaxed natural selection.** *Evol Appl.* 2017; **11**(2): 140–152.
[PubMed Abstract](#) | [Publisher Full Text](#) | [Free Full Text](#)
 20. Rasmussen HB: **Interactions between exogenous and endogenous retroviruses.** *J Biomed Sci.* 1997; **4**(1): 1–8.
[PubMed Abstract](#) | [Publisher Full Text](#)
 21. Krone B, Kolmel KF, Henz BM, *et al.*: **Protection against melanoma by vaccination with Bacille Calmette-Guerin (BCG) and/or vaccinia: an epidemiology-based hypothesis on the nature of a melanoma risk factor and its immunological control.** *Eur J Cancer.* 2005; **41**(1): 104–117.
[PubMed Abstract](#) | [Publisher Full Text](#)
 22. Hohn O, Hanke K, Bannert N: **HERV-K(HML-2), the Best Preserved Family of HERVs: Endogenization, Expression, and Implications in Health and Disease.** *Front Oncol.* 2013; **3**: 246.
[PubMed Abstract](#) | [Publisher Full Text](#) | [Free Full Text](#)
 23. International Human Genome Sequencing Consortium: **Finishing the euchromatic sequence of the human genome.** *Nature.* 2004; **431**(7011): 931–45.
[PubMed Abstract](#) | [Publisher Full Text](#)
 24. Jones RB, Garrison KE, Mujib S, *et al.*: **HERV-K-specific T cells eliminate diverse HIV-1/2 and SIV primary isolates.** *J Clin Invest.* 2012; **122**(12): 4473–89.
[PubMed Abstract](#) | [Publisher Full Text](#) | [Free Full Text](#)
 25. Chattopadhyay SK, Lander MR, Rands E, *et al.*: **Structure of endogenous murine leukemia virus DNA in mouse genomes.** *Proc Natl Acad Sci USA.* 1980; **77**(10): 5774–8.
[PubMed Abstract](#) | [Publisher Full Text](#) | [Free Full Text](#)
 26. Kubo Y, Nakagawa Y, Kakimi K, *et al.*: **Molecular cloning and characterization of a murine AIDS virus-related endogenous transcript expressed in C57BL/6 mice.** *J Gen Virol.* 1994; **75**(Pt 4): 881–8.
[PubMed Abstract](#) | [Publisher Full Text](#)
 27. Kubo Y, Kakimi K, Higo K, *et al.*: **Possible origin of murine AIDS (MAIDS) virus: conversion of an endogenous retroviral p12gag sequence to a MAIDS-inducing sequence by frameshift mutations.** *J Virol.* 1996; **70**(9): 6405–9.
[PubMed Abstract](#) | [Publisher Full Text](#) | [Free Full Text](#)
 28. Jolicoeur P: **Murine acquired immunodeficiency syndrome (MAIDS): an animal model to study the AIDS pathogenesis.** *FASEB J.* 1991; **5**(10): 2398–405.
[PubMed Abstract](#) | [Publisher Full Text](#)
 29. Beilharz MW, Samuels LM, Paun A, *et al.*: **Timed ablation of regulatory CD4⁺ T cells can prevent murine AIDS progression.** *J Immunol.* 2004; **172**(8): 4917–25.
[PubMed Abstract](#) | [Publisher Full Text](#)
 30. Meng L, Tompkins M, Miller M, *et al.*: **Lentivirus-activated T regulatory cells suppress T helper cell interleukin-2 production by inhibiting nuclear factor of activated T cells 2 binding to the interleukin-2 promoter.** *AIDS Res Hum Retroviruses.* 2014; **30**(1): 58–66.
[PubMed Abstract](#) | [Publisher Full Text](#) | [Free Full Text](#)
 31. Ondondo B, Jones E, Godkin A, *et al.*: **Home sweet home: the tumor microenvironment as a haven for regulatory T cells.** *Front Immunol.* 2013; **4**: 197.
[PubMed Abstract](#) | [Publisher Full Text](#) | [Free Full Text](#)
 32. Lee A, Nolan A, Watson J, *et al.*: **Identification of an ancient endogenous retrovirus, predating the divergence of the placental mammals.** *Philos Trans R Soc Lond B Biol Sci.* 2013; **368**(1626): 20120503.
[PubMed Abstract](#) | [Publisher Full Text](#) | [Free Full Text](#)
 33. Salzberg SL, White O, Peterson J, *et al.*: **Microbial genes in the human genome: lateral transfer or gene loss?** *Science.* 2001; **292**(5523): 1903–06.
[PubMed Abstract](#) | [Publisher Full Text](#)
 34. Crisp A, Boschetti C, Perry M, *et al.*: **Expression of multiple horizontally acquired genes is a hallmark of both vertebrate and invertebrate genomes.** *Genome Biol.* 2015; **16**(1): 50.
[PubMed Abstract](#) | [Publisher Full Text](#) | [Free Full Text](#)
 35. Dunning Hotopp JC: **Grafting or pruning in the animal tree: lateral gene transfer and gene loss?** *BMC Genomics.* 2018; **19**(1): 470.
[PubMed Abstract](#) | [Publisher Full Text](#) | [Free Full Text](#)
 36. Robinson K, Hotopp JD: **Bacteria and Humans Have Been Swapping DNA for Millennia.** *The Scientist.* 2016.
[Reference Source](#)
 37. Wright BE, Schmidt KH, Minnick MF: **Kinetic models reveal the *in vivo* mechanisms of mutagenesis in microbes and man.** *Mutat Res.* 2013; **752**(2): 129–37.
[PubMed Abstract](#) | [Publisher Full Text](#) | [Free Full Text](#)
 38. French DL, Laskov R, Scharff MD: **The role of somatic hypermutation in the generation of antibody diversity.** *Science.* 1989; **4909**(244): 1152–1157.
[PubMed Abstract](#) | [Publisher Full Text](#)
 39. Tomlinson IM, Walter G, Jones PT, *et al.*: **The imprint of somatic hypermutation on the repertoire of human germline V genes.** *J Mol Biol.* 1996; **256**(5): 813–17.
[PubMed Abstract](#) | [Publisher Full Text](#)
 40. Jones JM, Gellert M: **The taming of a transposon: V(D)J recombination and the immune system.** *Immunol Rev.* 2004; **200**: 233–48.
[PubMed Abstract](#) | [Publisher Full Text](#)
 41. Bianconi E, Piovesan A, Facchin F, *et al.*: **An estimation of the number of cells in the human body.** *Ann Hum Biol.* 2013; **40**(6): 463–71.
[PubMed Abstract](#) | [Publisher Full Text](#)
 42. Savage DC: **Microbial ecology of the gastrointestinal tract.** *Annu Rev Microbiol.* 1977; **31**: 107–133.
[PubMed Abstract](#) | [Publisher Full Text](#)
 43. Gerritsen J, Smidt H, Rijkers GT, *et al.*: **Intestinal microbiota in human health and disease: the impact of probiotics.** *Genes Nutr.* 2011; **6**(3): 209–240.
[PubMed Abstract](#) | [Publisher Full Text](#) | [Free Full Text](#)
 44. Müller WEG, Blumberg B, Müller IM: **Evolution of the innate and adaptive immune systems: relationships between potential immune molecules in the lowest metazoan phylum (Porifera) and those in vertebrates.** *Transplantation.* 1999; **68**(9): 1215–1227.
[PubMed Abstract](#) | [Publisher Full Text](#)
 45. Müller WEG, Müller IM: **Origin of the metazoan immune system: identification of the molecules and their functions in sponges.** *Integr Comp Biol.* 2003; **43**(2): 281–292.
[PubMed Abstract](#) | [Publisher Full Text](#)
 46. Prescott SL, Macaubas C, Holt BJ, *et al.*: **Transplacental priming of the human immune system to environmental allergens: universal skewing of initial T cell responses toward the Th2 cytokine profile.** *J Immunol.* 1998; **160**(10): 4730–7.
[PubMed Abstract](#)
 47. Khan TK, Palmer DJ, Prescott SL: **In-utero exposures and the evolving epidemiology of paediatric allergy.** *Curr Opin Allergy Clin Immunol.* 2015; **15**(5): 402–8.
[PubMed Abstract](#) | [Publisher Full Text](#)
 48. Fleischer DM, Greenhawt M, Sussman G, *et al.*: **Effect of Epicutaneous Immunotherapy vs Placebo on Reaction to Peanut Protein Ingestion Among Children With Peanut Allergy: The PEPITES Randomized Clinical Trial.** *JAMA.* 2019; **321**(10): 946–955.
[PubMed Abstract](#) | [Publisher Full Text](#) | [Free Full Text](#)
 49. Albuhairi S, El Khoury K, Yee C, *et al.*: **A twenty-two-year experience with Hymenoptera venom immunotherapy in a US pediatric tertiary care center 1996-2018.** *Ann Allergy Asthma Immunol.* 2018; **121**(6): 722–728.
[PubMed Abstract](#) | [Publisher Full Text](#)
 50. Rook G, Bäckhed F, Levin BR, *et al.*: **Evolution, human-microbe interactions, and life history plasticity.** *Lancet.* 2017; **390**(10093): 521–530.
[PubMed Abstract](#) | [Publisher Full Text](#)
 51. Garn H, Bahn S, Baune BT, *et al.*: **Current concepts in chronic inflammatory diseases: Interactions between microbes, cellular metabolism, and inflammation.** *J Allergy Clin Immunol.* 2016; **138**(1): 47–56.
[PubMed Abstract](#) | [Publisher Full Text](#)
 52. Bloomfield SF, Rook GA, Scott EA, *et al.*: **Time to abandon the hygiene hypothesis: new perspectives on allergic disease, the human microbiome, infectious disease prevention and the role of targeted hygiene.** *Perspect Public Health.* 2016; **136**(4): 213–24.
[PubMed Abstract](#) | [Publisher Full Text](#) | [Free Full Text](#)
 53. Rook GAW, Dalgleish A: **Infection, immunoregulation, and cancer.** *Immunol Rev.* 2011; **240**(1): 141–59.
[PubMed Abstract](#) | [Publisher Full Text](#)
 54. Coventry BJ, Lilly CA, Hersey P, *et al.*: **Prolonged Repeated Vaccine Immunotherapy Induces Long-Term Clinical Responses and Survival for Advanced Metastatic Melanoma.** *J Immunother Cancer.* 2014; **2**: 9.
[PubMed Abstract](#) | [Publisher Full Text](#) | [Free Full Text](#)
 55. Mountford CE, Grossman G, Reid G, *et al.*: **Characterization of transformed cells and tumors by proton nuclear magnetic resonance spectroscopy.** *Cancer Res.* 1982; **42**(6): 2270–6.
[PubMed Abstract](#)
 56. Mackinnon WB, Huscchtscha L, Dent K, *et al.*: **Correlation of cellular differentiation in human colorectal carcinoma and adenoma cell lines with metabolite profiles determined by 1H magnetic resonance spectroscopy.** *Int J Cancer.* 1994; **59**(2): 248–61.
[PubMed Abstract](#) | [Publisher Full Text](#)
 57. Yakoub D, Keun HC, Goldin R, *et al.*: **Metabolic profiling detects field effects in nondysplastic tissue from esophageal cancer patients.** *Cancer Res.* 2010; **70**(22): 9129–36.
[PubMed Abstract](#) | [Publisher Full Text](#)
 58. Coventry B, Heinzel S: **CD1a in Human Cancers: a new role for an old molecule.** *Trends Immunol.* 2004; **25**(5): 242–248.
[PubMed Abstract](#) | [Publisher Full Text](#)
 59. Athena AC, Boddy AM, Jansen G, *et al.*: **Cancer across the Tree of Life: Cooperation and Cheating in Multicellularity.** *Philos Trans R Soc Lond B Biol Sci.* 2015; **370**(1673): 20140219.
[PubMed Abstract](#) | [Publisher Full Text](#) | [Free Full Text](#)
 60. Theodore B: **The Origins of Malignant Tumors.** Baltimore, MD: The Williams and Wilkins Company, 1929.
[Reference Source](#)
 61. Weinberg RA: **The Biology of Cancer.** Garland Science, N.Y., 2007.
[Reference Source](#)

62. Aktipis AC: <https://slate.com/technology/2017/04/cancer-has-been-with-us-since-the-origins-of-multicellularity.html>. 2010.
63. Chen H, He X: **The convergent cancer evolution toward a single cellular destination.** *Mol Biol Evol.* 2016; **33**(1): 4–12.
[PubMed Abstract](#) | [Publisher Full Text](#)
64. Davies PCW, Lineweaver CH: **Cancer tumors as Metazoa 1.0: tapping genes of ancient ancestors.** *Phys Biol.* 2011; **8**(1): 015001.
[PubMed Abstract](#) | [Publisher Full Text](#) | [Free Full Text](#)
65. Lineweaver CH, Davies PCW, Vincent MD: **Targeting cancer's weaknesses (not its strengths): Therapeutic strategies suggested by the atavistic model.** *BioEssays.* 2014; **36**(9): 827–835.
[PubMed Abstract](#) | [Publisher Full Text](#) | [Free Full Text](#)
66. Cisneros L, Bussey KJ, Orr AJ, *et al.*: **Ancient genes establish stress-induced mutation as a hallmark of cancer.** *PLoS One.* 2017; **12**(4): e0176258.
[PubMed Abstract](#) | [Publisher Full Text](#) | [Free Full Text](#)
67. Bussey KJ, Cisneros LH, Lineweaver CH, *et al.*: **Ancestral gene regulatory networks drive cancer.** *Proc Natl Acad Sci U S A.* 2017; **114**(24): 6160–6162.
[PubMed Abstract](#) | [Publisher Full Text](#) | [Free Full Text](#)
68. Lineweaver CH, Davies PCW: **Comparison of the Atavistic Model of Cancer to Somatic Mutation Theory: Phylostratigraphic Analyses Support the Atavistic Model, Biophysical Reviews and Letters, Special Issue on Cancer.** (in press), 2020.
69. Adamson ED: **Oncogenes in Development.** *Development* 1987; **99**(4): 449–71.
[PubMed Abstract](#)
70. Monk M, Holding C: **Human embryonic genes re-expressed in cancer cells.** *Oncogene.* 2001; **20**(56): 8085–8091.
[PubMed Abstract](#) | [Publisher Full Text](#)
71. Naxerova K, Bult CJ, Peaston A, *et al.*: **Analysis of gene expression in a developmental context emphasizes distinct biological motifs in human cancers.** *Genome Biol.* 2008; **9**(7): R108.
[PubMed Abstract](#) | [Publisher Full Text](#) | [Free Full Text](#)
72. Abzhinov A: **von Baer's law for the ages: lost and found principles of developmental evolution.** *Trends Genet.* 2013; **29**(12): 712–722.
[PubMed Abstract](#) | [Publisher Full Text](#)
73. Raff RA: **The Shape of Life: Genes, Development and the Evolution of Animal Form.** University of Chicago Press, 1996.
[Reference Source](#)
74. Domazet-Lošo T, Tautz D: **A phylogenetically based transcriptome age index mirrors ontogenetic divergence patterns.** *Nature.* 2010; **468**(7325): 815–818.
[PubMed Abstract](#) | [Publisher Full Text](#)
75. Chen H, Lin F, Xing K, *et al.*: **The reverse evolution from multicellularity to unicellularity during carcinogenesis.** *Nat Commun.* 2015; **6**: 6367.
[PubMed Abstract](#) | [Publisher Full Text](#)
76. Chen W, Li Y, Wang Z: **Evolution of oncogenic signatures of mutation hotspots in tyrosine kinases supports the atavistic hypothesis of cancer.** *Sci Rep.* 2018; **8**(1): 8256.
[Publisher Full Text](#)
77. Wu A, Zhang Q, Lambert G, *et al.*: **Ancient hot and cold genes and chemotherapy resistance emergence.** *Proc Natl Acad Sci U S A.* 2015; **112**(33): 10467–72.
[PubMed Abstract](#) | [Publisher Full Text](#) | [Free Full Text](#)
78. Trigos AS, Pearson RB, Papenfuss AT, *et al.*: **Altered interactions between unicellular and multicellular genes drive hallmarks of transformation in a diverse range of solid tumors.** *Proc Natl Acad Sci U S A.* 2017; **114**(24): 6406–6411.
[PubMed Abstract](#) | [Publisher Full Text](#) | [Free Full Text](#)
79. Trigos AS, Pearson RB, Papenfuss AT, *et al.*: **Somatic mutations in early metazoan genes disrupt regulatory links between unicellular and multicellular genes in cancer.** *eLife.* 2019; **8**: e40947.
[PubMed Abstract](#) | [Publisher Full Text](#) | [Free Full Text](#)
80. Zhou JX, Cisneros L, Knijnenburg T, *et al.*: **Convergent Science.** *Physical Oncology.* 2018; **20184**: 2.
81. Cisneros L, Bussey KJ, Orr AJ, *et al.*: **Ancient genes establish stress-induced mutation as a hallmark of cancer.** *PLoS One.* 2017; **12**(4): e0176258.
[PubMed Abstract](#) | [Publisher Full Text](#) | [Free Full Text](#)
82. Cipponi A, Goode DL, Bedo J, *et al.*: **MTOR signaling orchestrates stress-induced mutagenesis, facilitating adaptive evolution in cancer.** *Science.* 2020; **368**(6495): 1127–1131.
[PubMed Abstract](#) | [Publisher Full Text](#)
83. Murphy K, Travers P, Walport M, *et al.*: **Janeway's immunobiology - NLM Catalog - NCBI.** 8th Edition. ed. Garland Science, New York, 2012.
[Reference Source](#)
84. Ravid K, Lu J, Zimmet JM, *et al.*: **Roads to polyploidy: The megakaryocyte example.** *J Cell Physiol.* 2002; **190**(1): 7–20.
[PubMed Abstract](#) | [Publisher Full Text](#)
85. Anatskaya OV, Vinogradov AE: **Genome multiplication as adaptation to tissue survival: Evidence from gene expression in mammalian heart and liver.** *Genomics.* 2007; **89**(1): 70–80.
[PubMed Abstract](#) | [Publisher Full Text](#)
86. Hanahan D, Weinberg RA: **Chapter 2: Hallmarks of Cancer: an organizing principle of cancer medicine.** In *Cancer: Principles & Practice of Oncology.* 10th Edn Chapter 2, (Lippincott Williams & Wilkins Health Library, Wolters Kluwer, 2015.
[Reference Source](#)
87. Germain PL: **Cancer cells and adaptive explanations.** *Biol Philos.* 2012; **27**: 785–810.
[Publisher Full Text](#)
88. Weinberg RA: **The Biology of Cancer,** New York: Garland Science, 2007.
[Reference Source](#)
89. Morales DP, Souza RF, Spechler SJ: **Hallmarks of cancer progression in Barrett's oesophagus.** *Lancet.* 2002; **360**(9345): 1587–9.
[PubMed Abstract](#) | [Publisher Full Text](#)
90. Lineweaver CH, Chopra A: **The biological overview effect: our place in nature.** *Journal of Big History.* 2019; **III**(3): 109–122.
[Publisher Full Text](#)
91. Warburg O: **On the origin of cancer cells.** *Science.* 1956; **123**(3191): 309–314.
[PubMed Abstract](#) | [Publisher Full Text](#)
92. Coley WB: **The treatment of malignant tumors by repeated inoculations of erysipelas: with a report of ten original cases.** *Am J Med Sci.* 1893; **105**: 487–511.
93. Kim SH, Castro F, Paterson Y, *et al.*: **High efficacy of a *Listeria*-based vaccine against metastatic breast cancer reveals a dual mode of action.** *Cancer Res.* 2009; **69**(14): 5860–6.
[PubMed Abstract](#) | [Publisher Full Text](#) | [Free Full Text](#)
94. Gravekamp C, Paterson Y: **Harnessing *Listeria* monocytogenes to target tumors.** *Cancer Biol Ther.* 2010; **9**(4): 257–65.
[PubMed Abstract](#) | [Publisher Full Text](#) | [Free Full Text](#)
95. Nguyen VH, Kim HS, Ha JM, *et al.*: **Genetically engineered *Salmonella typhimurium* as an imageable therapeutic probe for cancer.** *Cancer Res.* 2010; **70**(1): 18–23.
[PubMed Abstract](#) | [Publisher Full Text](#)
96. Galmbacher K, Heisig M, Hotz C, *et al.*: ***Shigella*-mediated depletion of macrophages in a murine breast model is associated with tumor regression.** *PLoS One.* 2010; **5**(3): e9572.
[PubMed Abstract](#) | [Publisher Full Text](#) | [Free Full Text](#)
97. Quispe-Tintaya W, Chandra D, Jahangir A, *et al.*: **Nontoxic radioactive *Listeria* is a highly effective therapy against metastatic pancreatic cancer.** *Proc Natl Acad Sci U S A.* 2013; **110**(21): 8668–73.
[PubMed Abstract](#) | [Publisher Full Text](#) | [Free Full Text](#)
98. Coster TS, Hoge CW, VanDeVerg LL, *et al.*: **Vaccination against shigellosis with attenuated *Shigella flexneri* 2a astrain SC602.** *Infect Immun.* 1999; **67**(7): 3437–43.
[PubMed Abstract](#) | [Publisher Full Text](#) | [Free Full Text](#)
99. Donnelly O, Harrington K, Melcher A, *et al.*: **Live viruses to treat cancer.** *J R Soc Med.* 2013; **106**(8): 310–4.
[PubMed Abstract](#) | [Publisher Full Text](#) | [Free Full Text](#)
100. Burrell RA, McGranahan N, Bartek J, *et al.*: **The causes and consequences of genetic heterogeneity in cancer evolution.** *Nature.* 2013; **501**(7467): 338–45.
[PubMed Abstract](#) | [Publisher Full Text](#)
101. Munoz J, Swanton C, Kurzrock R: **Molecular profiling and the reclassification of cancer: divide and conquer.** *Am Soc Clin Oncol Educ Book.* 2013; 127–34.
[PubMed Abstract](#) | [Publisher Full Text](#)
102. Murugaesu N, Chew SK, Swanton C: **Adapting clinical paradigms to the challenges of cancer clonal evolution.** *Am J Pathol.* 2013; **182**(6): 1962–71.
[PubMed Abstract](#) | [Publisher Full Text](#)
103. Jamal-Hanjani M, Thanopoulou E, Peggs KS, *et al.*: **Tumour heterogeneity and immune-modulation.** *Curr Opin Pharmacol.* 2013; **13**(4): 497–503.
[PubMed Abstract](#) | [Publisher Full Text](#) | [Free Full Text](#)
104. Datta RS, Gutteridge A, Swanton C, *et al.*: **Modelling the evolution of genetic instability during tumour progression.** *Evol Appl.* 2013; **6**(1): 20–33.
[PubMed Abstract](#) | [Publisher Full Text](#) | [Free Full Text](#)
105. Dingli D, Chalub FACC, Santos FC, *et al.*: **Cancer phenotype as the outcome of an evolutionary game between normal and malignant cells.** *Br J Cancer.* 2009; **101**(7): 1130–1136.
[PubMed Abstract](#) | [Publisher Full Text](#) | [Free Full Text](#)
106. Zhou D, Luo Y, Dingli D, *et al.*: **The invasion of de-differentiating cancer cells into hierarchical tissues.** *PLoS Comput Biol.* 2019; **15**(7): e1007167.
[PubMed Abstract](#) | [Publisher Full Text](#) | [Free Full Text](#)
107. Coley WB: **II. Contribution to the Knowledge of Sarcoma.** *Ann Surg.* 1891; **14**(3): 199–220.
[PubMed Abstract](#) | [Publisher Full Text](#) | [Free Full Text](#)
108. Coley WB: **Treatment of inoperable malignant tumors with toxins of erysipelas and the bacillus prodigiosus.** *Trans Am Surg Assn.* 1894; **12**: 183–212.
109. Coley WB: **Disappearance of a recurrent carcinoma after injections of mixed toxins.** *Ann Surg.* 1912; **55**: 897–8.
110. Anonymous: **Erysipelas and prodigious toxins (Coley).** *JAMA.* 1934; **103**: 1067–9.
111. Hopton Cann SA, van Netten JP, van Netten C, *et al.*: **Spontaneous regression: a hidden treasure buried in time.** *Med Hypotheses.* 2002; **58**(2): 115–9.
[PubMed Abstract](#) | [Publisher Full Text](#)
112. Hopton Cann SA, van Netten JP, van Netten C: **Dr William Coley 49. and tumour regression: a place in history or in the future Postgrad. Med J.** 2003; **79**: 672–680.

113. North RJ, Awwad M: **T cell suppression as an obstacle to immunologically-mediated tumor regression: elimination of suppression results in regression.** *Prog Clin Biol Res.* 1987; **244**: 345–58.
[PubMed Abstract](#)
114. Awwad M, North RJ: **Immunologically mediated regression of a murine lymphoma after treatment with anti-L3T4 antibody. A consequence of removing L3T4+ suppressor T cells from a host generating predominantly Lyt-2+ T cell-mediated immunity.** *J Exp Med.* 1988; **168**(6): 2193–206.
[PubMed Abstract](#) | [Publisher Full Text](#) | [Free Full Text](#)
115. Awwad M, North RJ: **Cyclophosphamide (Cy)-facilitated adoptive immunotherapy of a Cy-resistant tumour. Evidence that Cy permits the expression of adoptive T-cell mediated immunity by removing suppressor T cells rather than by reducing tumour burden.** *Immunology.* 1988; **65**(1): 87–92.
[PubMed Abstract](#) | [Free Full Text](#)
116. Awwad M, North RJ: **Sublethal, whole-body ionizing irradiation can be tumor promotive or tumor destructive depending on the stage of development of underlying antitumor immunity.** *Cancer Immunol Immunother.* 1988; **26**(1): 55–60.
[PubMed Abstract](#) | [Publisher Full Text](#)
117. Hill JO, Awwad M, North RJ: **Elimination of CD4+ suppressor T cells from susceptible BALB/c mice releases CD8+ T lymphocytes to mediate protective immunity against Leishmania.** *J Exp Med.* 1989; **169**(5): 1819–27.
[PubMed Abstract](#) | [Publisher Full Text](#) | [Free Full Text](#)
118. Awwad M, North RJ: **Cyclophosphamide-induced immunologically mediated regression of a cyclophosphamide-resistant murine tumor: a consequence of eliminating precursor L3T4+ suppressor T-cells.** *Cancer Res.* 1989; **49**(7): 1649–54.
[PubMed Abstract](#)
119. North RJ, Awwad M, Dunn PL: **The immune response to tumors.** *Transplant Proc.* 1989; **21**(1 Pt 1): 575–7.
[PubMed Abstract](#)
120. North RJ, Awwad M: **Elimination of cycling CD4+ suppressor T cells with an anti-mitotic drug releases non-cycling CD8+ T cells to cause regression of an advanced lymphoma.** *Immunology.* 1990; **71**(1): 90–5.
[PubMed Abstract](#) | [Free Full Text](#)
121. Awwad M, North RJ: **Radiosensitive barrier to T-cell-mediated adoptive immunotherapy of established tumors.** *Cancer Res.* 1990; **50**(8): 2228–33.
[PubMed Abstract](#)
122. Darrasse-Jèze G, Bergot AS, Durgeau A, et al.: **Tumor emergence is sensed by self-specific CD44hi memory Tregs that create a dominant tolerogenic environment for tumors in mice.** *J Clin Invest.* 2009; **119**(9): 2648–62.
[PubMed Abstract](#) | [Publisher Full Text](#) | [Free Full Text](#)
123. Coventry BJ, Ashdown ML, Quinn MA, et al.: **CRP identifies homeostatic immune oscillations in cancer patients: a potential treatment targeting tool?** *J Transl Med.* 2009; **7**: 102.
[PubMed Abstract](#) | [Publisher Full Text](#) | [Free Full Text](#)
124. Ashdown ML, Coventry BJ: **A Matter of Time Australasian Science.** 2010; 18–20.
125. Hodi FS, O'Day SJ, McDermott DF, et al.: **Improved survival with ipilimumab in patients with metastatic melanoma.** *N Engl J Med.* 2010; **363**(8): 711–723.
[PubMed Abstract](#) | [Publisher Full Text](#) | [Free Full Text](#)
126. Prieto PA, Yang JC, Sherry RM, et al.: **CTLA-4 blockade with ipilimumab: long-term follow-up of 177 patients with metastatic melanoma.** *Clin Cancer Res.* 2012; **18**(7): 2039–2047.
[PubMed Abstract](#) | [Publisher Full Text](#) | [Free Full Text](#)
127. Topalian SL, Hodi FS, Brahmer JR, et al.: **Safety, activity, and immune correlates of anti-PD-1 antibody in cancer.** *N Engl J Med.* 2012; **366**(26): 2443–54.
[PubMed Abstract](#) | [Publisher Full Text](#) | [Free Full Text](#)
128. Brahmer JR, Tykodi SS, Chow LQ, et al.: **Safety and activity of anti-PD-L1 antibody in patients with advanced cancer.** *N Engl J Med.* 2012; **366**(26): 2455–65.
[PubMed Abstract](#) | [Publisher Full Text](#) | [Free Full Text](#)
129. Ott PA, Hodi FS, Robert C: **CTLA-4 and PD-1/PD-L1 Blockade: New Immunotherapeutic Modalities with Durable Clinical Benefit in Melanoma Patients.** *Clin Cancer Res.* 2013; **19**(19): 5300–5309.
[PubMed Abstract](#) | [Publisher Full Text](#)
130. Wolchok JD, Kluger H, Callahan MK, et al.: **Nivolumab plus ipilimumab in advanced melanoma.** *N Engl J Med.* 2013; **369**(2): 122–33.
[PubMed Abstract](#) | [Publisher Full Text](#) | [Free Full Text](#)
131. Coventry BJ, Hersey P, Halligan AM, et al.: **Immuno-Chemotherapy Using Repeated Vaccine Treatment Can Produce Successful Clinical Responses in Advanced Metastatic Melanoma.** *Journal of Cancer Therapy.* 2010; **1**: 205–213.
[Reference Source](#)
132. Coventry BJ, Ashdown ML, Markovic SN: **Immune Therapies for Cancer: Bimodality—The Blind Spot to Clinical Efficacy—Lost in Translation.** *J Immunother.* 2011; **34**: 9–717.
133. Coventry BJ, Ashdown ML: **Complete clinical responses to cancer therapy caused by multiple divergent approaches: a repeating theme lost in translation.** *Cancer Manag Res.* 2012; **4**: 137–149.
[PubMed Abstract](#) | [Publisher Full Text](#) | [Free Full Text](#)
134. Coventry BJ, Ashdown ML: **The 20th anniversary of interleukin-2 therapy: bimodal role explaining longstanding random induction of complete clinical responses.** *Cancer Manag Res.* 2012; **4**: 215–21.
[PubMed Abstract](#) | [Publisher Full Text](#) | [Free Full Text](#)
135. McNally A, Hill GR, Sparwasser T, et al.: **CD4⁺CD25⁺ regulatory T cells control CD8⁺ T-cell effector differentiation by modulating IL-2 homeostasis.** *Proc Natl Acad Sci U S A.* 2011; **108**: 7529–7534.
[PubMed Abstract](#) | [Publisher Full Text](#) | [Free Full Text](#)
136. Boyman O, Sprent J: **The role of interleukin-2 during homeostasis and activation of the immune system.** *Nat Rev Immunol.* 2012; **12**(3): 180–190.
[PubMed Abstract](#) | [Publisher Full Text](#)
137. Jain N, Nguyen H, Chambers C, et al.: **Dual function of CTLA-4 in regulatory T cells and conventional T cells to prevent multiorgan autoimmunity.** *Proc Natl Acad Sci U S A.* 2011; **107**(4): 1524.
[PubMed Abstract](#) | [Publisher Full Text](#) | [Free Full Text](#)
138. **A delicate balance: tweaking IL-2 immunotherapy.** *Nat Med.* 2012; **18**(2): 208–209.
[PubMed Abstract](#) | [Publisher Full Text](#)
139. Holtan SG, Dronca RS, Nevala WK, et al.: **The dynamic human immune response to cancer: it might just be rocket science.** *Immunotherapy.* 2011; **3**(9): 1021–4.
[PubMed Abstract](#) | [Publisher Full Text](#)
140. Leontovich AA, Dronca RS, Suman VJ, et al.: **Fluctuation of systemic immunity in melanoma and implications for timing of therapy.** *Front Biosci (Elite Ed).* 2012; **4**: 958–75.
[PubMed Abstract](#)
141. Madondo MT, Tuytens S, Turnbull B, et al.: **Variability in CRP regulatory T cells and effector T cells over time in gynaecological cancer patients: a study of potential oscillatory behaviour and correlation.** *J Transl Med.* 2014; **12**: 179.
[PubMed Abstract](#) | [Publisher Full Text](#) | [Free Full Text](#)
142. Dorraki M, Fouladzadeh A, Salamon SJ, et al.: **On detection of periodicity in C-reactive protein (CRP) levels.** *Sci Rep.* 2018; **8**(1): 11979.
[PubMed Abstract](#) | [Publisher Full Text](#) | [Free Full Text](#)
143. Dorraki M, Fouladzadeh A, Salamon SJ, et al.: **Can C-Reactive Protein (CRP) Time Series Forecasting be Achieved via Deep Learning?** *IEEE Access.* 2019; **593**: 11–20.
[Publisher Full Text](#)
144. Murphy KM, Topel RH: **The value of health and longevity.** *J Polit Econ.* 2006; **114**: 871–904.
[Publisher Full Text](#)

Open Peer Review

Current Peer Review Status:  

Version 2

Reviewer Report 11 December 2020

<https://doi.org/10.5256/f1000research.29628.r74419>

© 2020 Dalglish A. This is an open access peer review report distributed under the terms of the [Creative Commons Attribution License](#), which permits unrestricted use, distribution, and reproduction in any medium, provided the original work is properly cited.



Angus Dalglish

Department of Oncology, Institute for Infection and Immunity, St George's University of London, London, UK

This will now provide a valuable source for investigating the evolutionary link between the immune system and cancer.

The section on time line evolution reporting in "Darwins" and millions of years etc, could be made more impactful by using a figure to capture the scale and of genomic, immune response in living organisms.

Competing Interests: I declare that I know Brendon Coventry from Immunotherapy meetings.

I confirm that I have read this submission and believe that I have an appropriate level of expertise to confirm that it is of an acceptable scientific standard.

Reviewer Report 12 November 2020

<https://doi.org/10.5256/f1000research.29628.r74418>

© 2020 Austyn J. This is an open access peer review report distributed under the terms of the [Creative Commons Attribution License](#), which permits unrestricted use, distribution, and reproduction in any medium, provided the original work is properly cited.



Jonathan M. Austyn

Nuffield Department of Surgical Sciences, John Radcliffe Hospital, University of Oxford, Oxford, UK

Some comments on immunological aspects (only):

1. Recommend use of the generic term 'pattern-recognition receptors, PRRs' instead of the more-specific term 'toll-like receptors, TLRs, which are a subset of PRRs.

2. Helpful to distinguish between somatic recombination - for generation of BCR and TCR, and analogous process for antibody class switching - and somatic hypermutation which should be restricted to antibody V regions, at least in humans. (There is evidence for somatic hypermutation of TCRs in shark alpha chains).

Competing Interests: No competing interests were disclosed.

I confirm that I have read this submission and believe that I have an appropriate level of expertise to confirm that it is of an acceptable scientific standard.

Version 1

Reviewer Report 10 September 2015

<https://doi.org/10.5256/f1000research.7216.r10255>

© 2015 Dalglish A. This is an open access peer review report distributed under the terms of the [Creative Commons Attribution License](#), which permits unrestricted use, distribution, and reproduction in any medium, provided the original work is properly cited.



Angus Dalglish

Department of Oncology, Institute for Infection and Immunity, St George's University of London, London, UK

I was asked to review this article, with full access to previous reviewer's report, Jonathan M Austyn, from the John Radcliffe Hospital. I agree that the article contains some very interesting ideas and concepts, which will be very stimulatory to a wide readership, particularly those studying cancer and practicing cancer (oncologists) who are slowly becoming aware that the immune system is important in the control of cancer and hence the development and evolution.

The review touches on some very broad and very interesting concepts, particularly with regards to evolution over time and the evolutionary difference between innate and adaptive immune systems and he has some of the concepts that are relevant to the hypothesis but perhaps not been elucidated that clearly, especially with regards to the concept of atavism and this has been pointed out by Jonathan Austyn with regards subtle differences in somatic recombination and hypermutation and mutation.

I also agree with rather more reaching, throwaway statements, such as 'cancer occurs in all humans and animals, thus remaining a mystery when several reasons have already been explored, such as random mutations and the concept of escaping tumour surveillance.cancer

Whereas references made to many infectious agents and the fact that they have ended up making up the vast majority of the intron genome, which has been shown to be due to the incorporation of many virus and bacterial sequences. The hypothesis depends very much on the shaping of

these agents and the immune system but does not deal adequately with how the immune is shaped by exposure to infectious agents during infant and childhood development.

Much of the references of this article is in large chunks, whereas the authors' papers are listed in large batches, for example; the work by North and colleagues are all listed together and referenced together.

I feel that in addressing this, that they have not acknowledged the work of others who have spent a long time working out the affects of basic infectious diseases on the immune system and how this translates to chronic infectious diseases and one author in particular stands out for his work on this and that is Graham Rook, he has published much on this about the exposure of pathogens and the dirt theory, how it impacts on chronic diseases in later life in the western world and, indeed, a review by him and this reviewer (Rook and Dalgleish, 2011) published in Immunological reviews in 2011 goes into great detail with regards to its impact on cancer.

Similarly, the impact of both infectious and non-infectious chronic activation/inflammation, which is relevant to many of the issues raised in this article, have not been addressed sufficiently, especially as it is so relevant to many of the speculations discussed. Again, there are a large number of authors and contributors who have gone from broad brush theories of the association of chronic inflammation and cancer, to those who have gone into great detail pointing out how it impacts on the molecular level of mutations in suppressor genes, such as P53, all the way through to immunological hypoxic pathways, etc., and I do not recognise this from the reference list which, as mentioned, is very block buster in its approach with an author's several contributions all being listed together throughout.

I also feel that, with regards to the homeostatic component focusing purely in Interleukin-2, that although it is true that it is one of several cytokines which contribute to activation and tolerance that a little bit more background should be given.

In conclusion, I think this is a very valuable piece of work of great interest to the rapidly proliferating and emerging population of cancer specialists who are slowly becoming aware that the immune system is extremely important in the management of this disease, a concept that has been ignored for the last few decades and foreign to most oncologist practising today. However, to make it more impactful and a 'must read' article it does require considerable focusing on the aspects raised by the referees and tighter structure, as it does seem to read rather like a speculative lecture in its current format.

With regards to referencing, there is a referral to Klazmann *et al.* and there is no Klazmann *et al.* in the references and this is a further example that the references need to be very carefully looked into, although a paper where he is the senior author is listed, I do not think that it is appropriate therefore to refer to it in the text as Klazmann *et al.*

Competing Interests: I declare that I know Brendon Coventry from Immunotherapy meetings.

I confirm that I have read this submission and believe that I have an appropriate level of expertise to confirm that it is of an acceptable scientific standard, however I have significant reservations, as outlined above.

Reviewer Report 13 August 2015

<https://doi.org/10.5256/f1000research.7216.r9959>

© 2015 Austyn J. This is an open access peer review report distributed under the terms of the [Creative Commons Attribution License](#), which permits unrestricted use, distribution, and reproduction in any medium, provided the original work is properly cited.



Jonathan M. Austyn

Nuffield Department of Surgical Sciences, John Radcliffe Hospital, University of Oxford, Oxford, UK

This article contains some very interesting ideas and concepts. However, to this reviewer (and with the greatest respect to the authors), it tends to read perhaps as 'stream of consciousness' writing rather than a considered scientific article. The authors show abundant enthusiasm in their writing, but this often appears to mask real scientific rigour. It is very difficult to identify a key hypothesis (or hypotheses), the structure of the sections seems to lack definition or focus, and it is sometimes almost impossible to understand what the main conclusions are from each. Furthermore, in a number of places, there seems to be a significant lack of scientific accuracy. For example, regarding some statements regarding the immune system, the authors do not clearly discriminate between somatic recombination (which applies to both T cell receptors and B cell receptors), somatic hypermutation (which applies only to the latter), hypervariable regions (which are present in both) and mutation (*per se*). As another example, in their discussion of atavism theory, the authors use the term 'tumour immunosuppression' but appear to apply this to the tumour rather than the host, where it really belongs. Even the authors' brief review of the evolution of the immune system seems to lack sufficient focus going from species to species during evolutionary time. There are also some rather vexing 'throwaway statements'. As just one example, regarding cancer, the authors state "The reason why cancer occurs at all in humans and animals thus remains a mystery". While it is certainly true that much remains unknown, the authors might usefully consider further Burnet's concept of tumour surveillance, particularly in its more recent form comprising immunoediting, equilibrium and escape phases. It might also be valuable to reconsider, in relation to the immune system's apparent capacity to eliminate tumours whether or not the immune system actually helps to eliminate the infectious agents (e.g. viruses) that can cause tumorigenesis rather than actual or potentially malignant cells (and, on that point, it is perhaps a little surprising that there is no mention of generic 'DAMPs' and 'PAMPs'). A further criticism is that the choice of immunological mechanisms under discussion sometimes feels rather random – why, for example, do the authors specifically focus on Fc receptors rather than complement receptors, or C-reactive protein rather than the many other molecules that play similar or related roles? Finally, regarding the single diagram that is presented, it is completely unclear why the authors have chosen to illustrate an 'IL-2 [sic] feedback loop'; without any justification this seems to be over-simplistic in the extreme. Nevertheless, to return to the initial point: this article does appear to contain some very interesting material that would potentially be of value to readers of the journal. To do these the greatest justice, however, really does seem to require a very careful, focussed, and considered rewriting of the present text into a completely revised and possibly restructured article.

Competing Interests: No competing interests were disclosed.

I confirm that I have read this submission and believe that I have an appropriate level of expertise to confirm that it is of an acceptable scientific standard, however I have significant reservations, as outlined above.

The benefits of publishing with F1000Research:

- Your article is published within days, with no editorial bias
- You can publish traditional articles, null/negative results, case reports, data notes and more
- The peer review process is transparent and collaborative
- Your article is indexed in PubMed after passing peer review
- Dedicated customer support at every stage

For pre-submission enquiries, contact research@f1000.com

F1000Research